

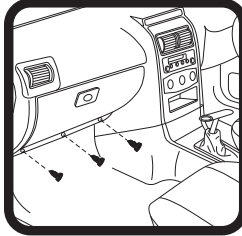
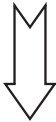
RYCO FILTERS



FITTING INSTRUCTIONS FOR RYCO CABIN FILTER RCA109P. HOLDEN ASTRA

(FILTER LOCATED BEHIND GLOVE BOX)

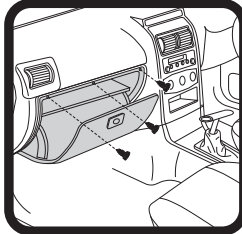
- 1: Remove 3 screws from bottom of glove box as shown using special tool.



- 8: Replace 3 screws in bottom of glove box as shown



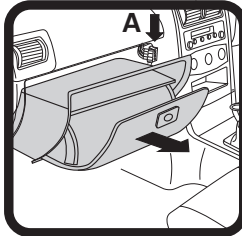
- 2: Remove 3 screws from top of glove box as shown using special tool.



- 7: Replace 3 screws in top of glove box as shown



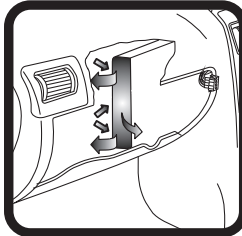
- 3: Remove glove box after disconnecting electrical connections at A.



- 6: Reconnect electrical connection and replace glove box.



- 4: Undo screw or clips, remove used filter noting direction of flow arrow on side of filter.



- 5: Fit new RYCO filter, note direction of flow arrow on side of filter.



GUD Automotive Pty Ltd
245 Sunshine Road Tottenham
Victoria 3012 Australia.
www.rycofilters.com.au

GUD (NZ) Ltd
626A Rosebank Road Avondale
Auckland, New Zealand
www.ryco.co.nz