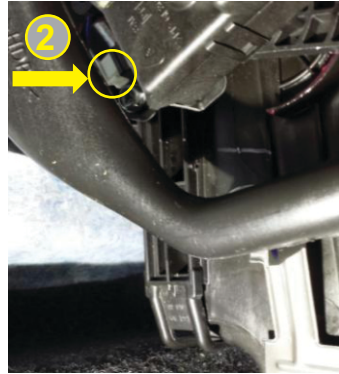


RYCO FILTERS

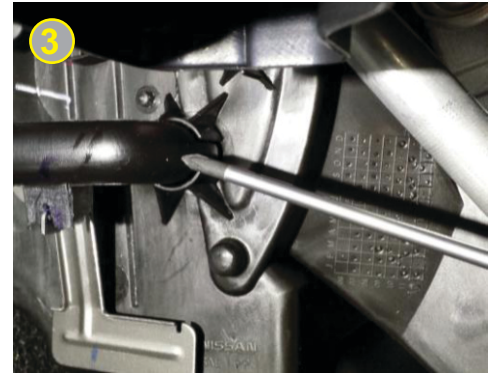
FITTING INSTRUCTIONS FOR RYCO CABIN AIR FILTER RCA188P NISSAN DUALIS J10. ALSO FITS NISSAN X-TRAIL T31



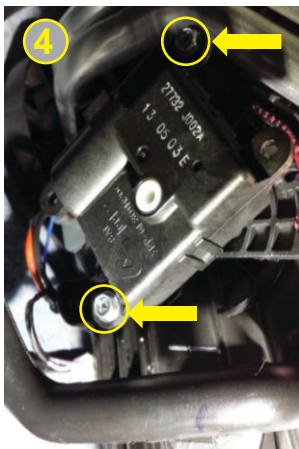
The cabin air filter is located behind the lower trim as indicated in image 1. Pull the trim out slowly starting from the end close to the firewall.



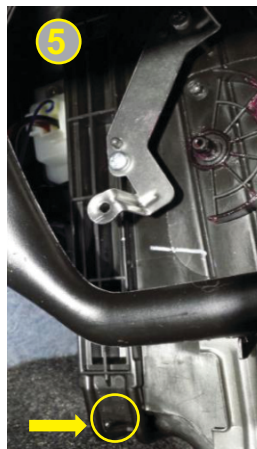
The housing is now visible close to the firewall at the end of the HVAC system. From this point on a small flat screw driver and a 8mm spanner or socket will be required.



Identify the pipe shown on image 3 and gently pull out to disconnect just the bottom section so it can be moved around to access the bolts securing the servo motor. Unplug the connector of the servo motor shown in image 2.



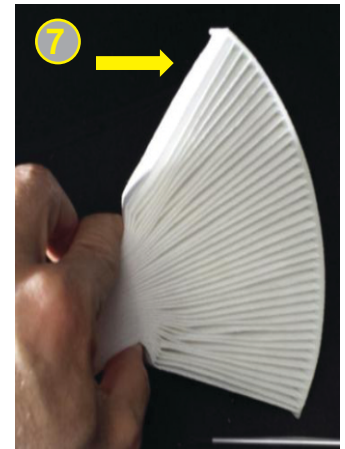
Moving the servo motor towards the front of the vehicle so the two bolts shown are accessible. Remove and gently pull the servo motor out.



Unclip the filter housing clip starting where instructed in image 5 and slide down. The filter will be visible at this point. With a small flat head screw driver or hook, reach for the filter and pull out. It will have to be squeezed in the middle to come out easily. Clean the area from any accumulated debris.



Fit the new filter by squeezing it as shown in image 7. Insert first the top corner of the filter and carefully push inside to avoid damage to the filter. When inserting the filter make sure it is in the right air flow direction. Please refer to the side of the filter for reference. Refit all components in reverse order.



GUD Automotive Pty Ltd
29 Taras Ave Altona North
Victoria 3025 Australia
www.rycofilters.com.au

GUD Automotive - A Division of GUD (NZ) Holdings Limited
626A Rosebank Road Avondale Auckland, New Zealand
www.ryco.co.nz