

RYCO FILTERS

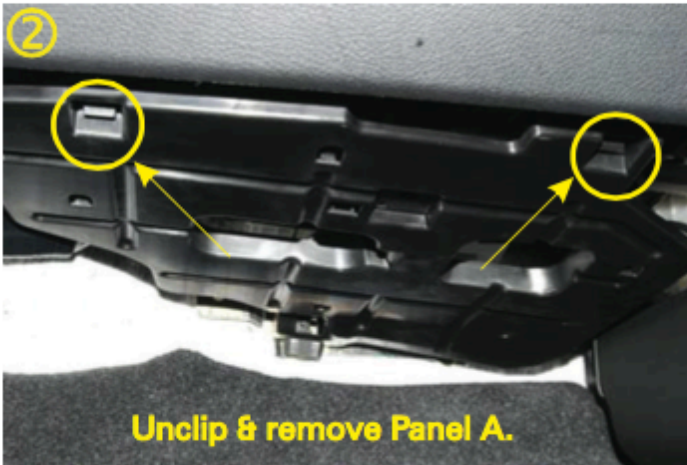


FITTING INSTRUCTIONS FOR RYCO CABIN FILTER RCA232P/MS MAZDA 3 (BL), ALL ENGINE TYPE, (04/09 - ON).

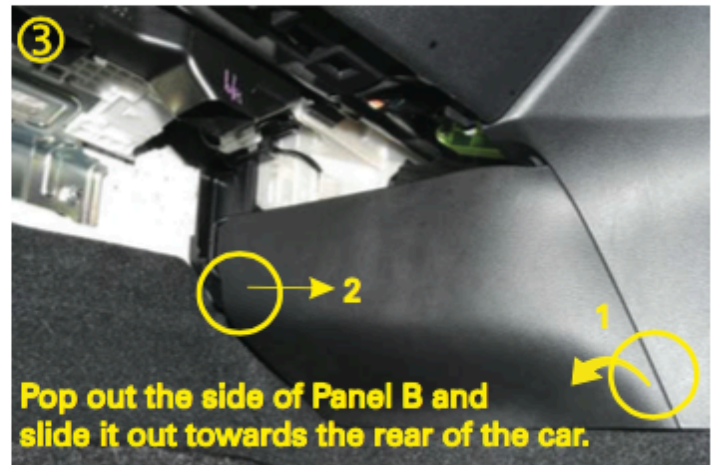
① Locate two plastic panels under the glove box on the passenger side of centre console.



Note: Unmounting the glove box is NOT required.



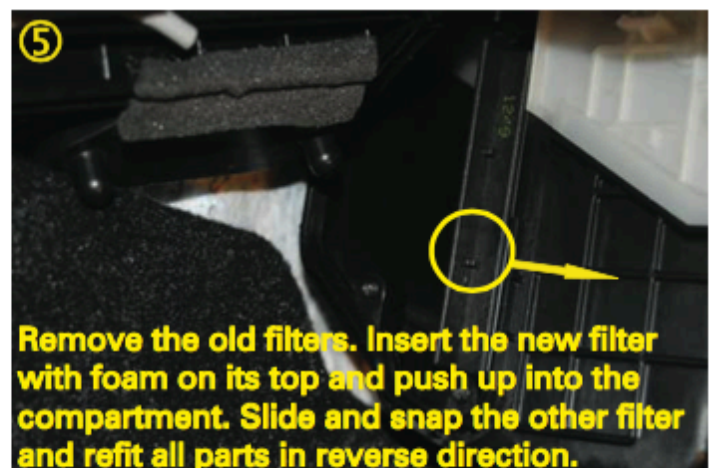
Unclip & remove Panel A.



Pop out the side of Panel B and slide it out towards the rear of the car.



Open the cabin filter "door" by unscrewing the two phillips screws.



Remove the old filters. Insert the new filter with foam on its top and push up into the compartment. Slide and snap the other filter and refit all parts in reverse direction.

GUD Automotive Pty Ltd
29 Taras Ave Altona North
Victoria 3025 Australia.
www.rycofilters.com.au

GUD Automotive -
A division of GUD (NZ) Holdings Limited
626A Rosebank Road Avondale
Auckland, New Zealand
www.ryco.co.nz